



QUATTROCCHI KWOK
ARCHITECTS

Historic Alameda High School Modernization & Seismic Upgrade

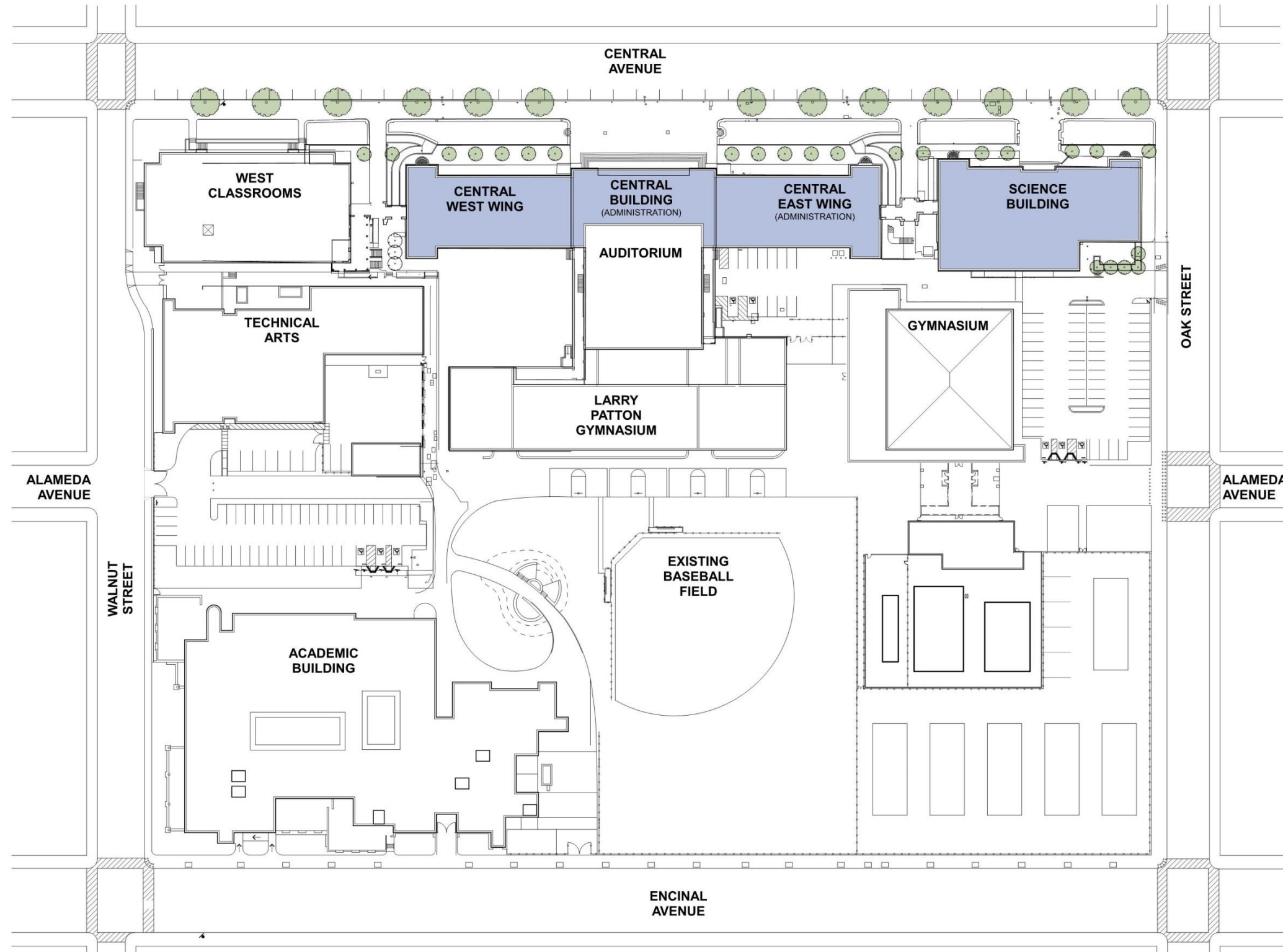
Alameda Unified School District

Schematic Design Approval

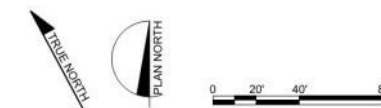
March 22, 2016

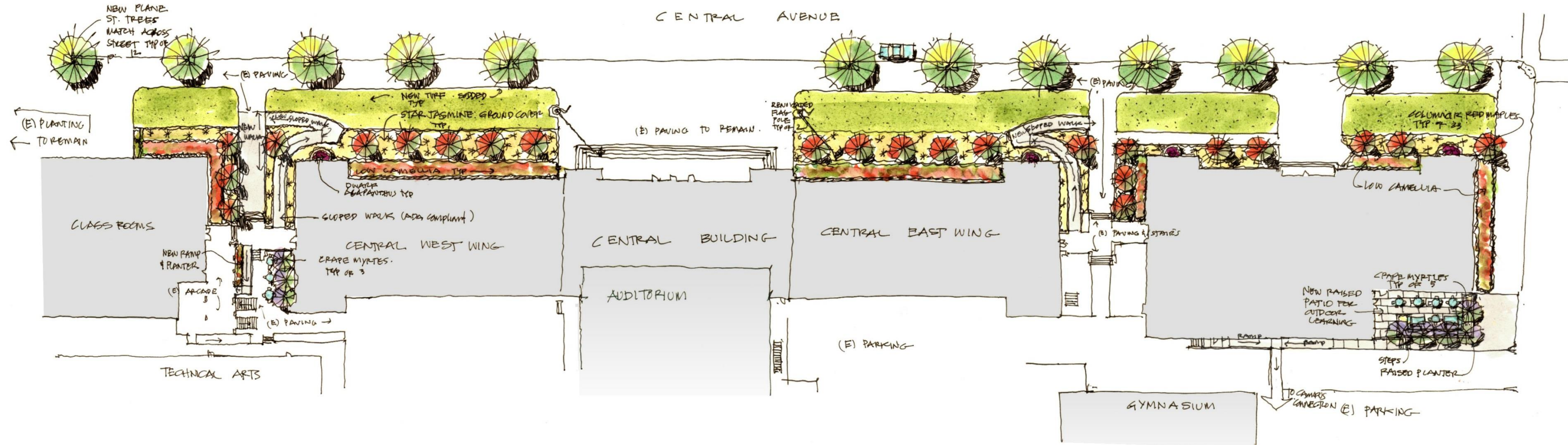


Aerial Campus Site Plan



Campus Site Plan





SCHEMATIC DESIGN PLAN

ALAMEDA HIGH SCHOOL

ALAMEDA, CALIFORNIA

Landscape Plan





CENTRAL AVENUE STREET TREES
MATCH EXISTING PLANE TREES



RED COLUMNAR MAPLE
NORTH SIDE ACCENT TREES



MUSKOGEE CRAPE MYRTLES
SOUTH PLAZA ACCENT TREES



YULETIDE CAMELLIA
HEDGE PLANTING



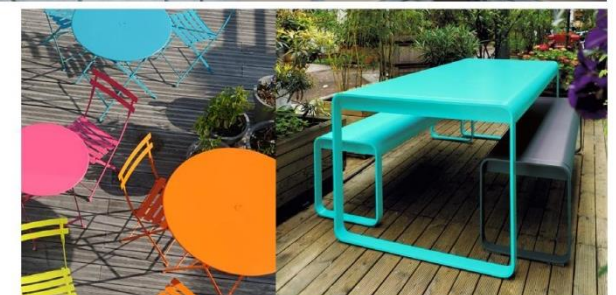
DWARF NILE LILY
ACCENT PLANTING



STAR JASMINE
BED PLANTING



SEASHORE PASPALUM
DROUGHT TOLERANT MOWED TURF



SITE FURNITURE OPTIONS

SCHEMATIC DESIGN PLAN

ALAMEDA HIGH SCHOOL

ALAMEDA, CALIFORNIA

Planting Schedule





LEGEND

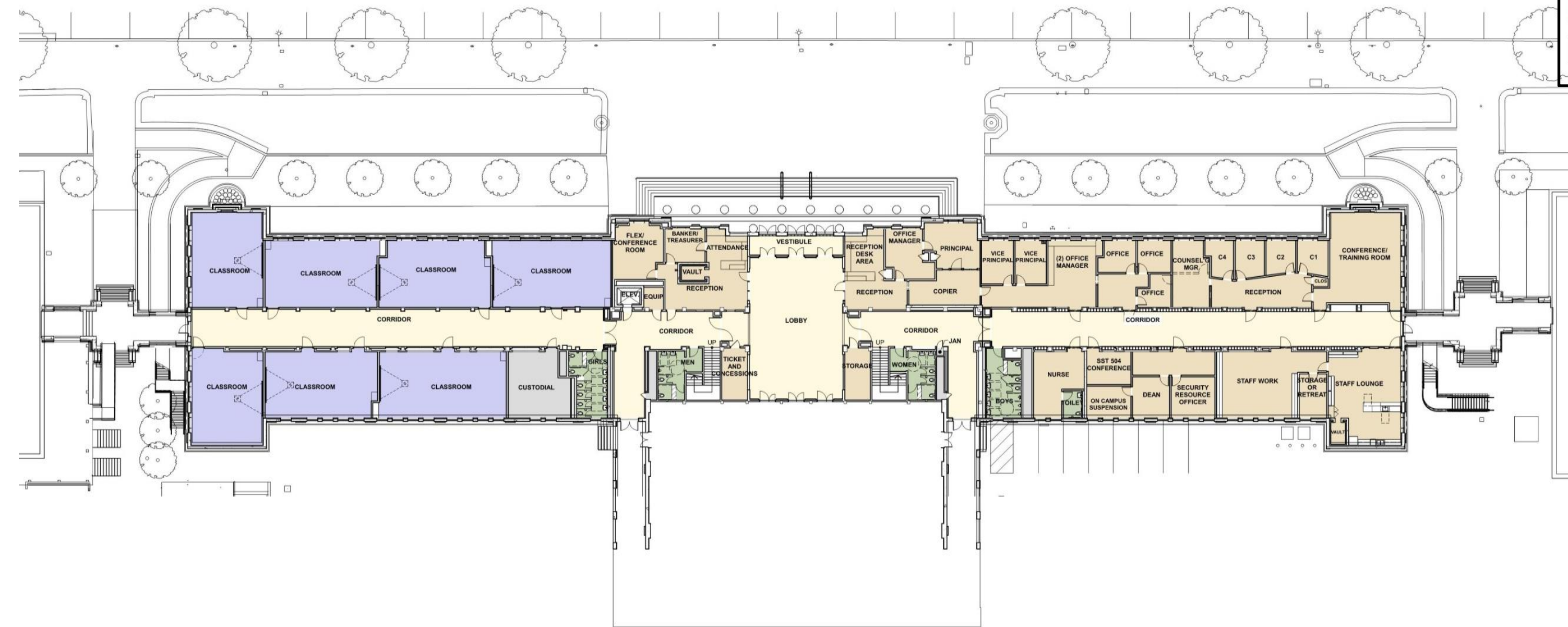
CIRCULATION

ADMINISTRATION/
CLASSROOMS/OFFICE

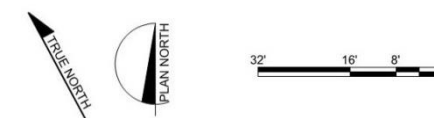
CLASSROOMS

RESTROOMS

STORAGE/ELECTRICAL/
CUSTODIAL

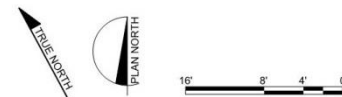


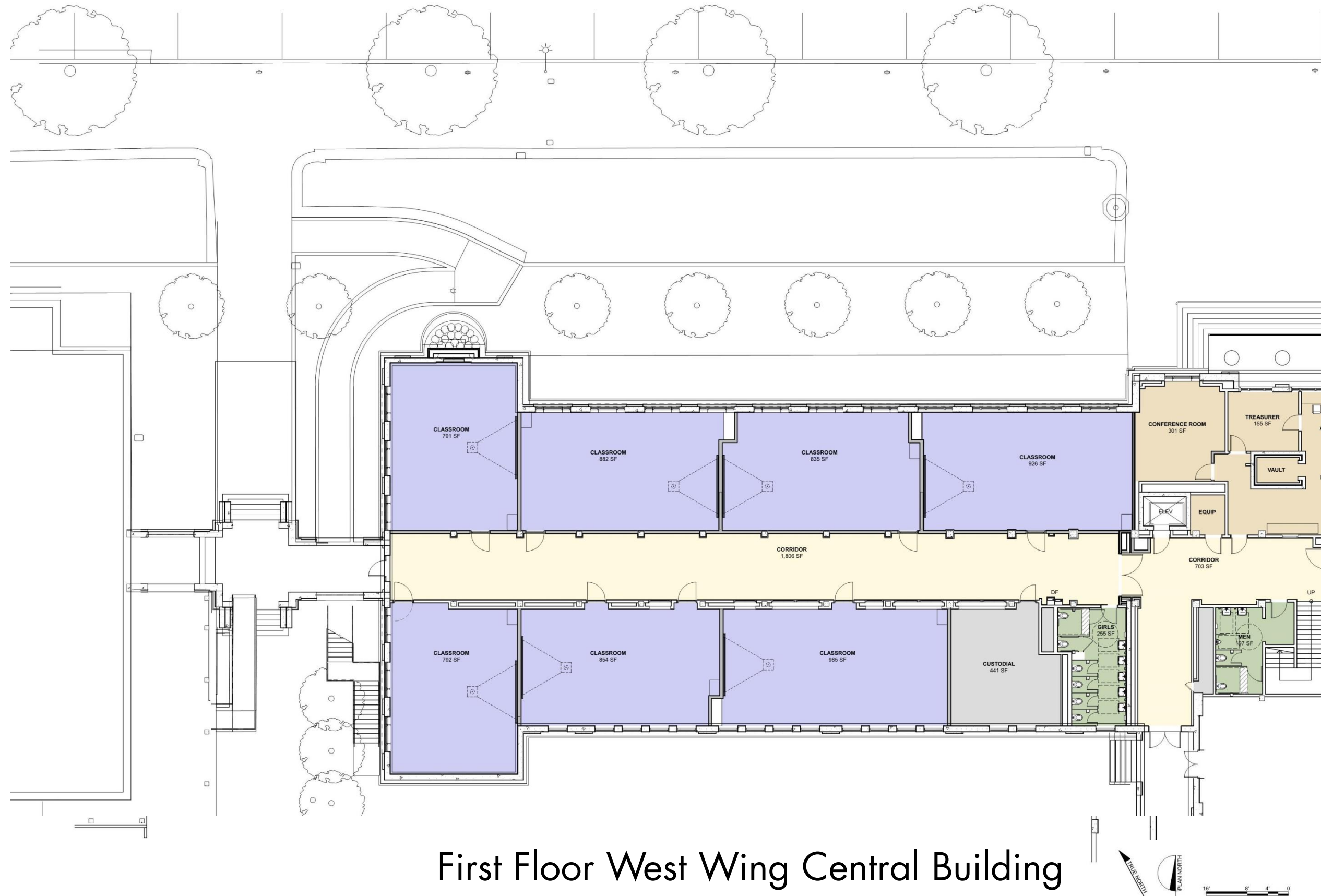
Overall First Floor Central Building





First Floor East Wing Central Building










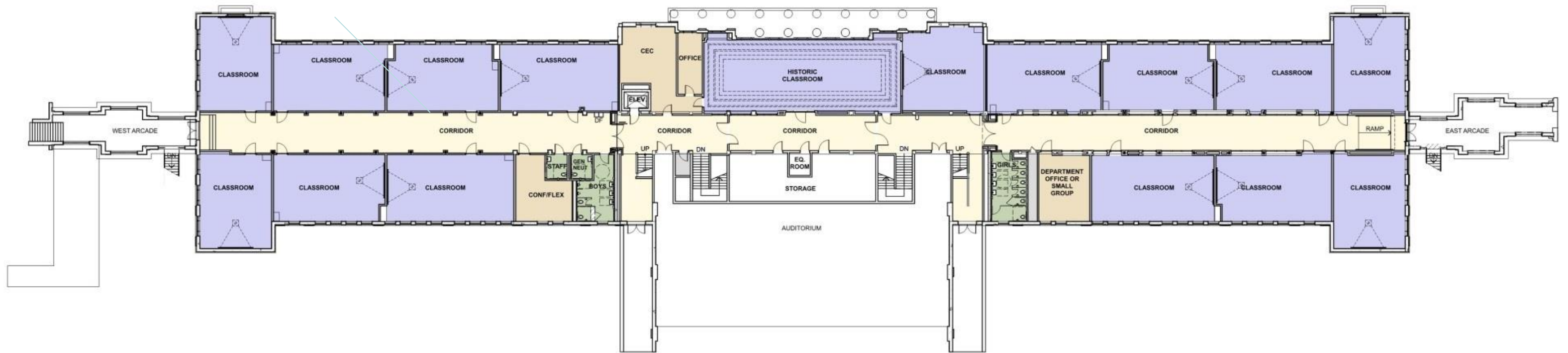
LEGEND

- CIRCULATION
- ADMINISTRATION/CLASSROOMS/OFFICE
- CLASSROOMS
- RESTROOMS
- STORAGE/ELECTRICAL/CUSTODIAL

First Floor West Wing Central Building








LEGEND	
	CIRCULATION
	ADMINISTRATION/ CLASSROOMS/OFFICE
	CLASSROOMS
	RESTROOMS
	STORAGE/ELECTRICAL/ CUSTODIAL

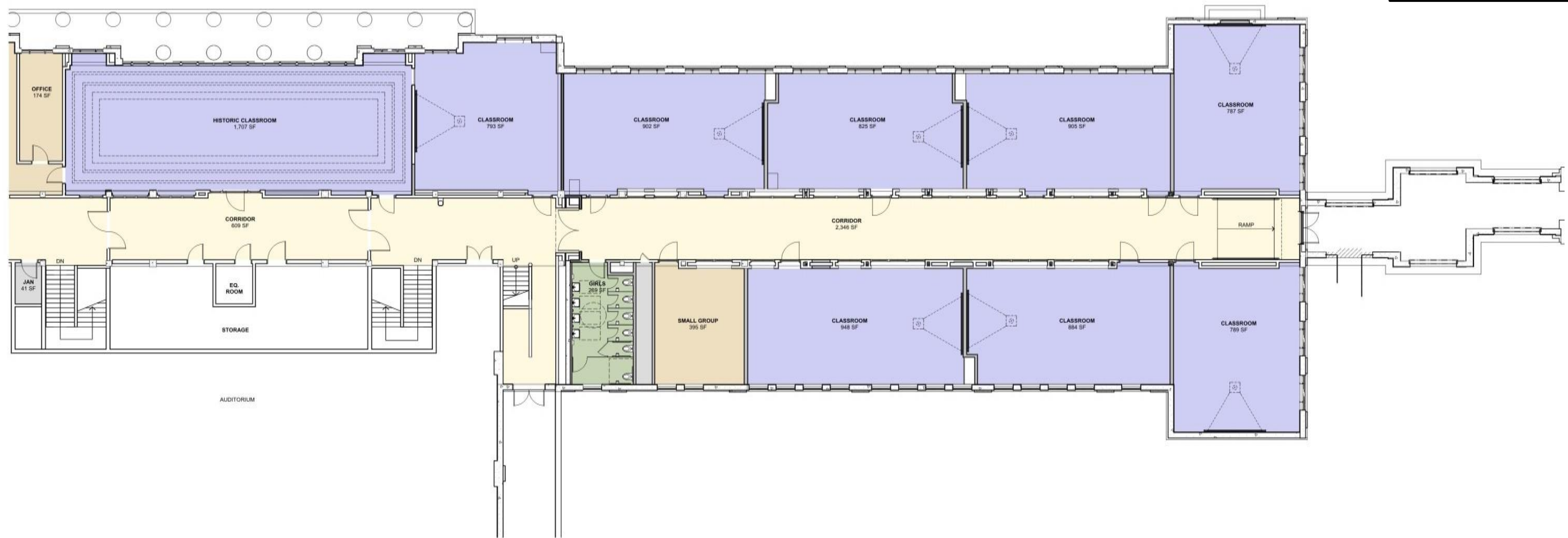


Overall Second Floor Central Building

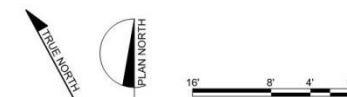




LEGEND	
	CIRCULATION
	ADMINISTRATION/ CLASSROOMS/OFFICE
	CLASSROOMS
	RESTROOMS
	STORAGE/ELECTRICAL/ CUSTODIAL



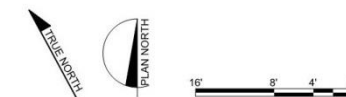
Second Floor East Wing Central Building

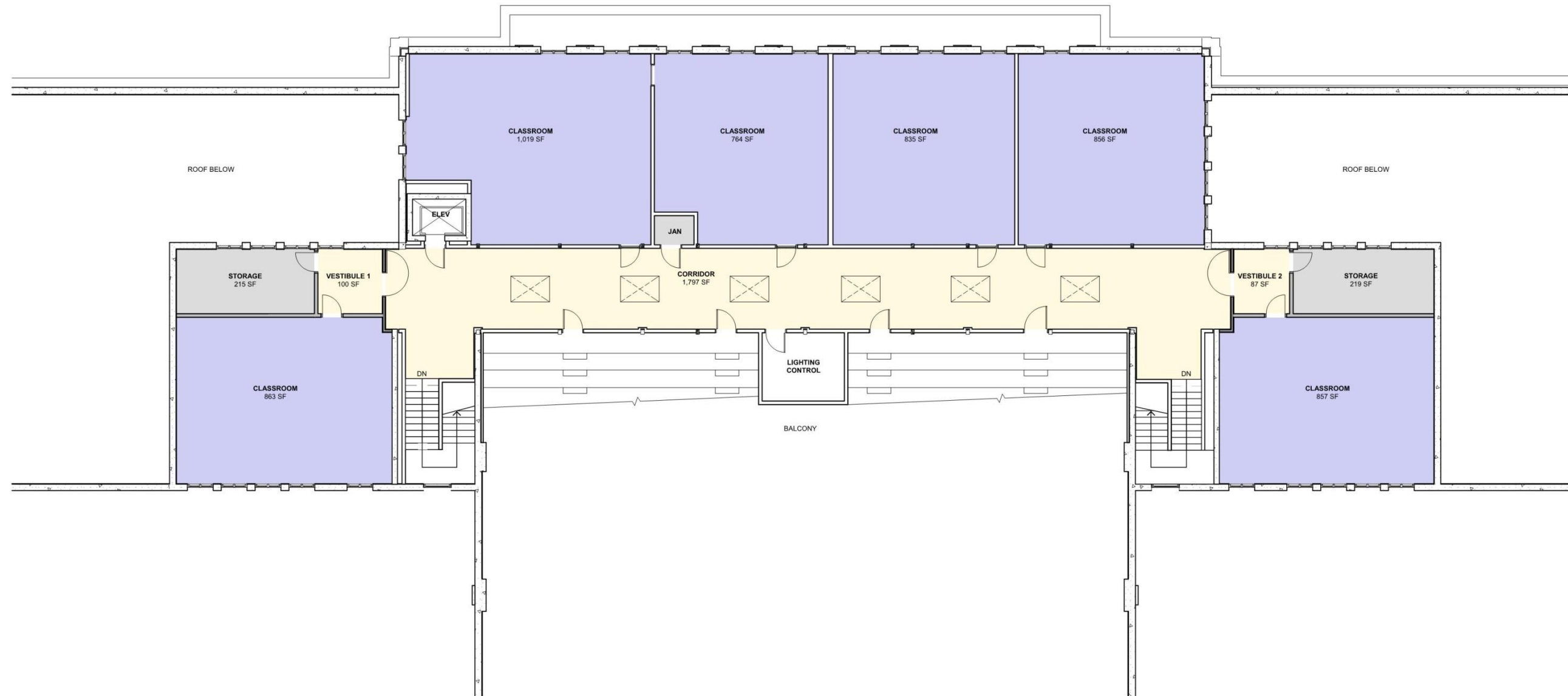




LEGEND	
	CIRCULATION
	ADMINISTRATION/ CLASSROOMS/OFFICE
	CLASSROOMS
	RESTROOMS
	STORAGE/ELECTRICAL/ CUSTODIAL

Second Floor West Wing Central Building

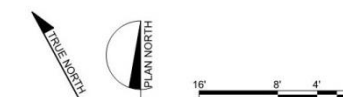


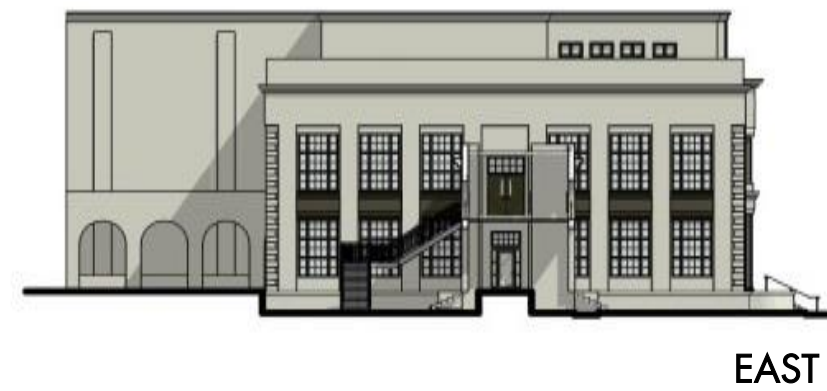


LEGEND

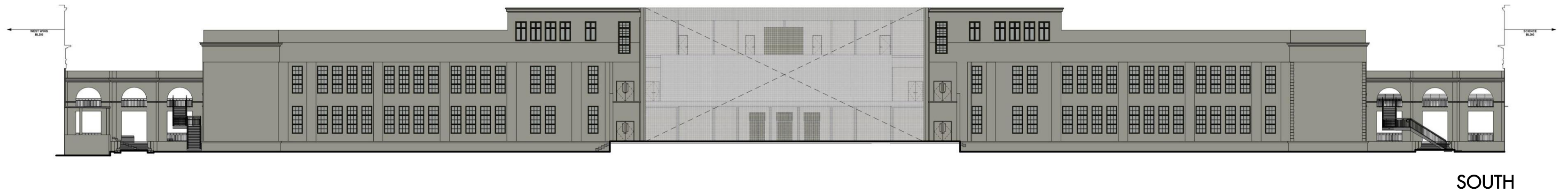
- CIRCULATION
- ADMINISTRATION/ CLASSROOMS/OFFICE
- CLASSROOMS
- RESTROOMS
- STORAGE/ELECTRICAL/ CUSTODIAL

Overall Third Floor Central Building





Exterior Elevations Central Building



Exterior Elevations Central Building



Existing



Modernized

Second Floor Historic Classroom Central Building

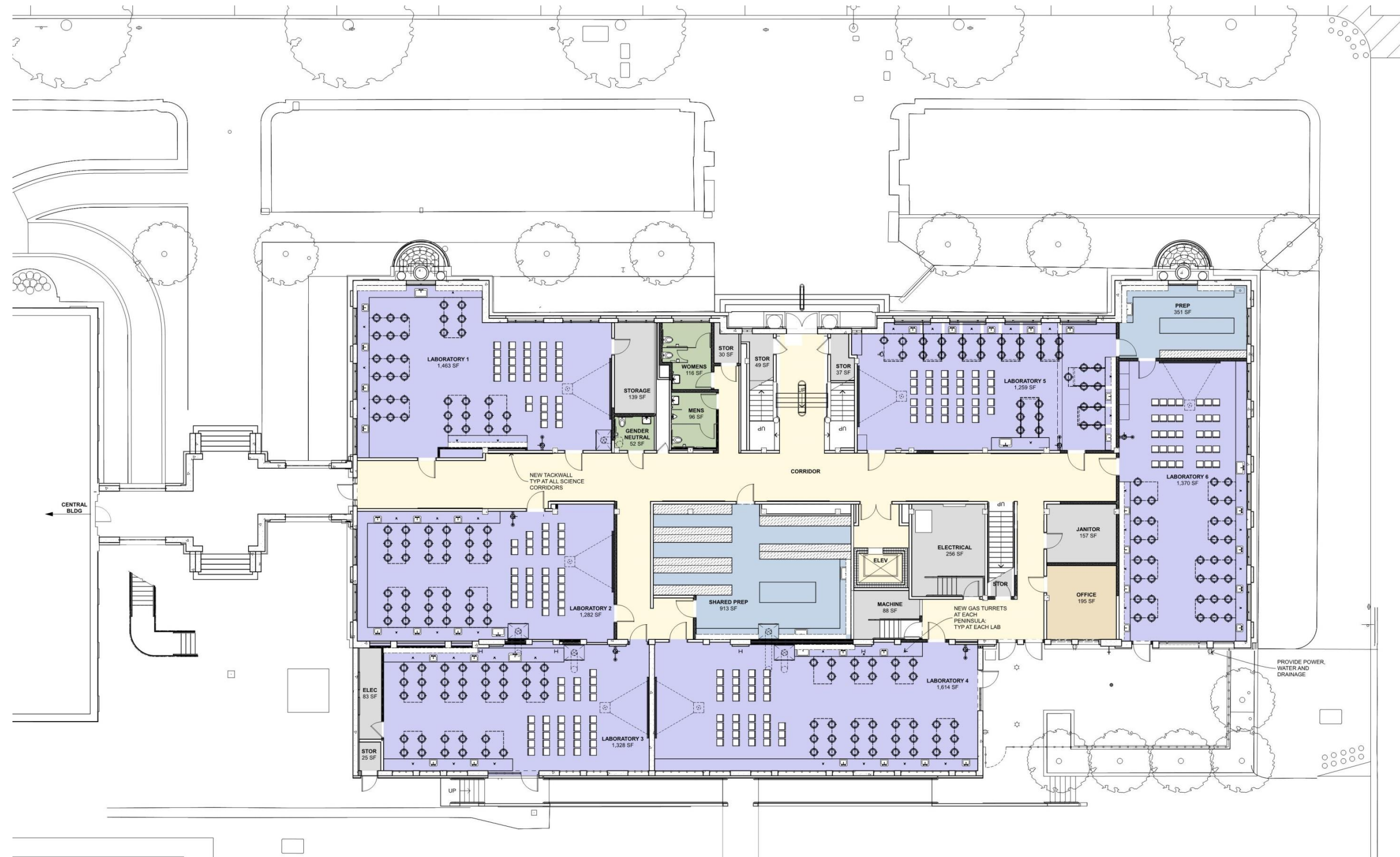


Existing



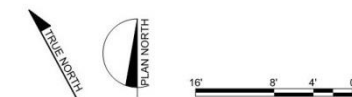
Modernized

Typical Classroom Central Building








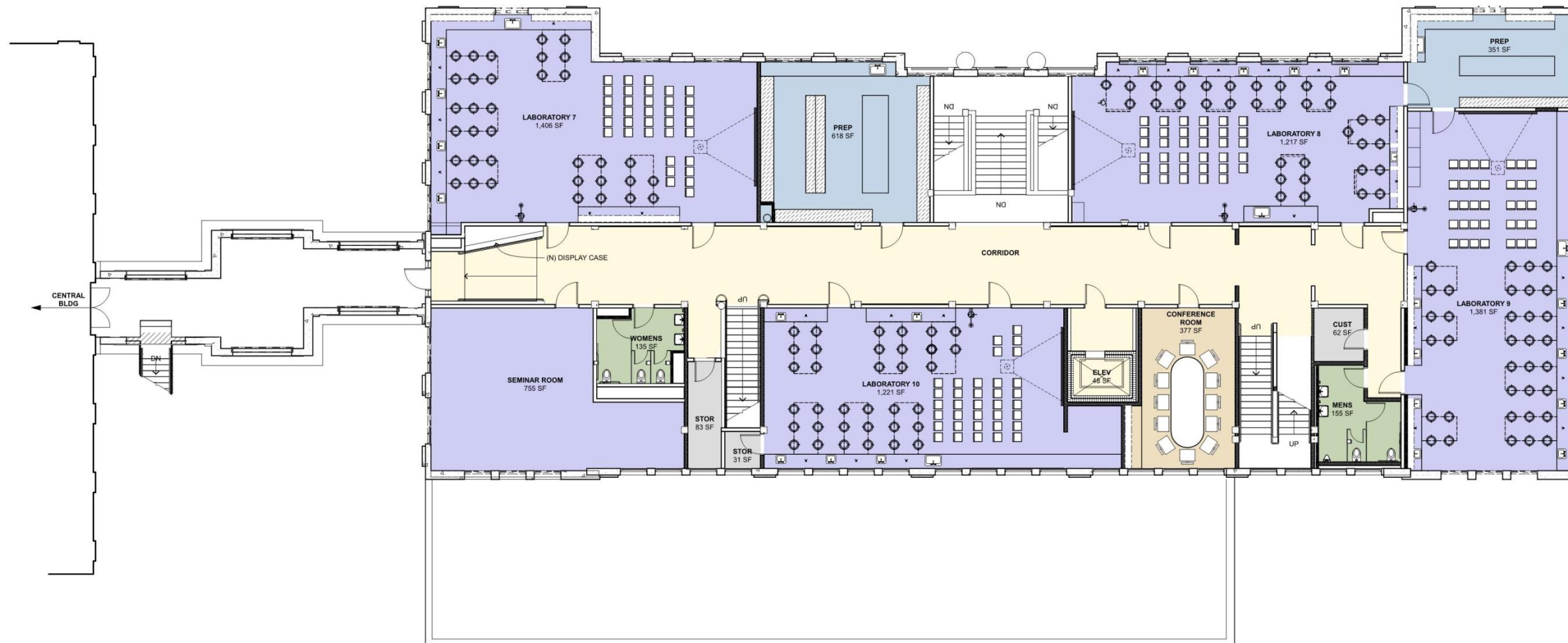
LEGEND	
	CIRCULATION
	ADMINISTRATION/ CLASSROOMS/OFFICE
	CLASSROOMS
	RESTROOMS
	STORAGE/ELECTRICAL/ CUSTODIAL

First Floor Science Building










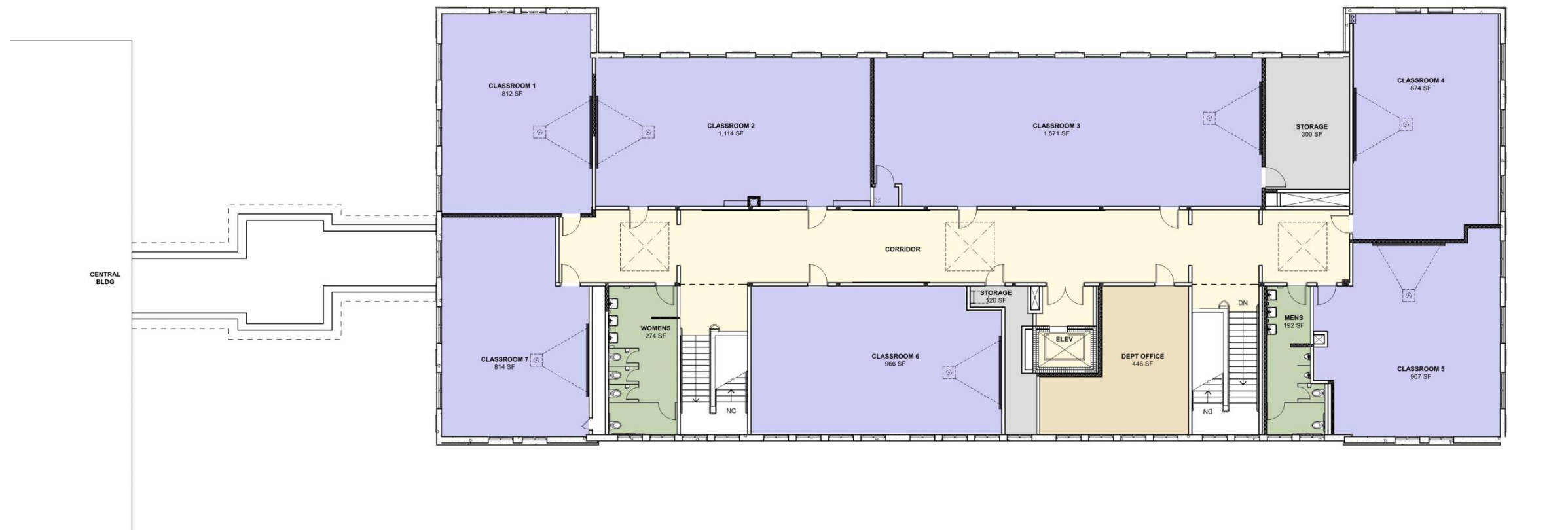
LEGEND	
	CIRCULATION
	ADMINISTRATION/ CLASSROOMS/OFFICE
	CLASSROOMS
	RESTROOMS
	STORAGE/ELECTRICAL/ CUSTODIAL



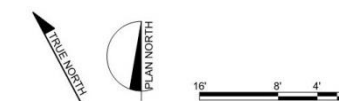
Second Floor Science Building

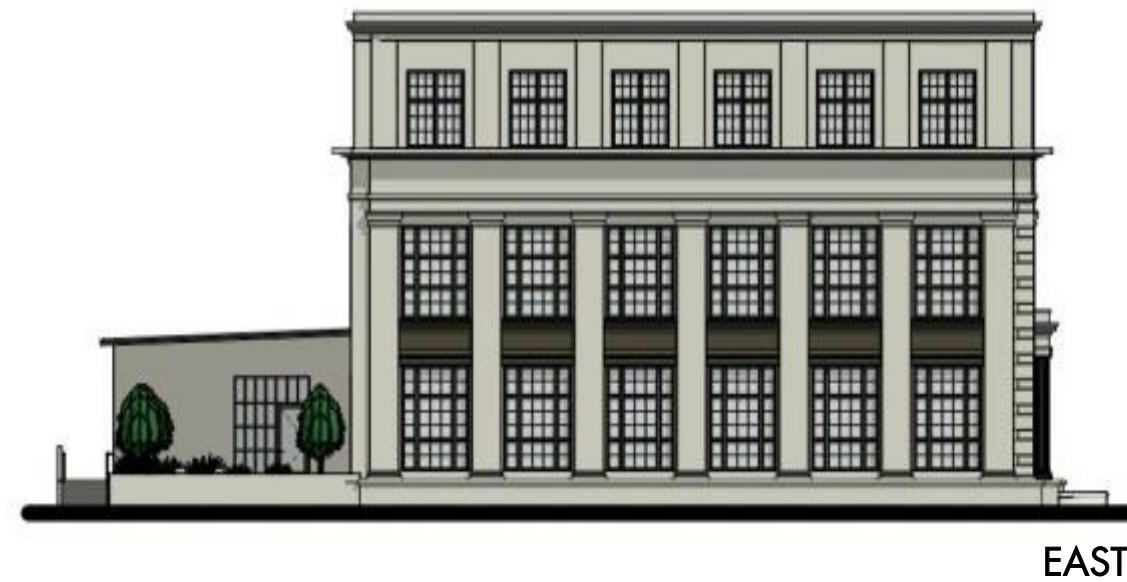


LEGEND	
	CIRCULATION
	ADMINISTRATION/ CLASSROOMS/OFFICE
	CLASSROOMS
	RESTROOMS
	STORAGE/ELECTRICAL/ CUSTODIAL



Third Floor Science Building





Exterior Elevations Science Building



Exterior Elevations Science Building



Existing



Modernized

Science Classroom at Science Building



Existing



Modernized

Third Floor Corridor at Science Building



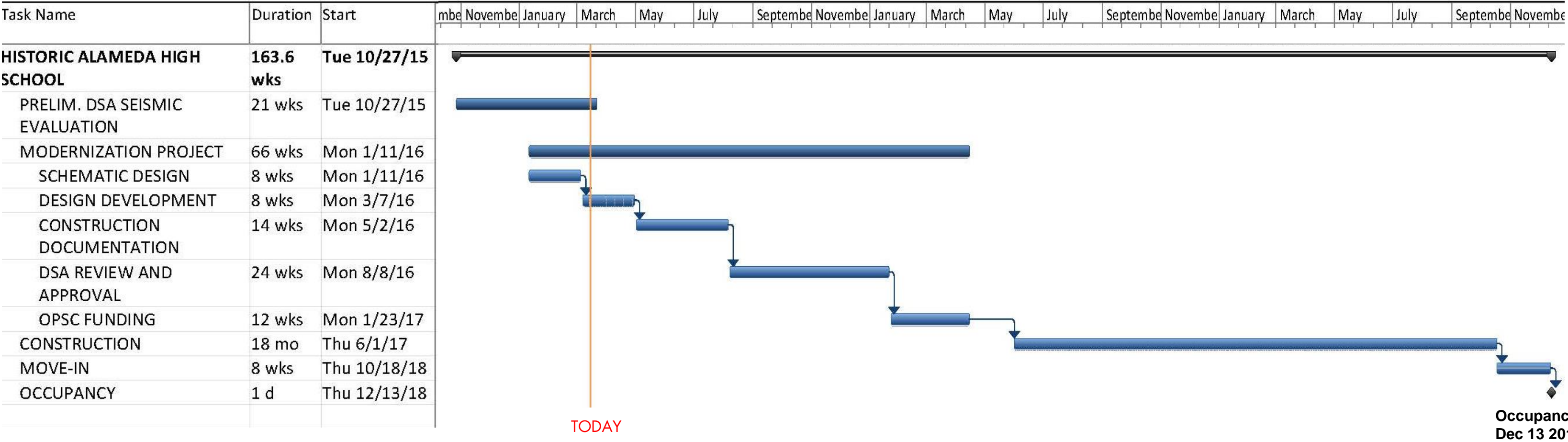
Existing



Modernized

Outdoor learning space at Southeast corner: Science Building

PROJECT SCHEDULE



Historic Alameda High School Modernization/ Seismic Upgrade

Alameda High School - Schematic Design

Project Cost Summary Update

Updated: March 16 2016

Campus Budget (2014 Implementation Plan B)	\$44,000,000
Escalation to 2017 dollars (5% annually)	\$6,935,500
Campus Budget (2017)	\$50,935,500
Minus Soft Costs (25% of Total Project Budget)	\$12,733,875
Total Construction Budget (2017 dollars)	\$38,201,625

Construction Project Estimates	Construction Timeline	Cost/Allowance (escalated to 2017)	Notes
Historic AHS Modernization (Includes roofing, structural rehab, restoration, safety and security, accessibility, technology, and MEP)	2017	\$39,400,595	From March 2016 Schematic Design Estimate
Total Estimated HAHS Construction Cost		\$39,400,595	

Future AHS Projects

West Wing and Tech. Arts Bldg Improvements	2018	\$3,663,170	2014 Estimate
--------------------------------------------	------	-------------	---------------

Notes:

1. Construction project SD estimates include 15% design contingency
2. Construction estimates do not include cost for construction contingency, FF&E, or Hazardous Material Abatement
3. "Soft Costs" include Change Order Contingency and Design/Engineering, Construction Management, DSA, & Inspection/Testing.
4. Upgrades to rest of AHS, including Academic Building, Patton Gym and Kofman Auditorium not included.

THANK YOU...

