

# Bay Farm Elementary School

---

Measure I Bond Project  
Safety and Security Upgrades, Perimeter Fencing Schematic  
Design,  
and Technology and Communications upgrades

Board Presentation  
May 22, 2017

ALAMEDA UNIFIED SCHOOL DISTRICT

# Safety and Security Committee

---

## DISTRICT

Robbie Lyng, Maintenance, Operations and Facilities

Shariq Khan, Interim CBO, AUSD

Rob van Herk, Director Technology Services

Kelly Lara, Student Services *(No longer with District)*

Susan Davis, Director of Communications

Brenda Parella, Project Manager, Maintenance,  
Operations & Facilities

## SCHOOL STAFF AND COMMUNITY

Kirsten Zazo, Encinal High School Principal

Robert Ithurnburn, Alameda High School Principal

Michael Hans, Lincoln Middle School Principal

Cheryl Wilson, Ruby Bridges Elementary School  
Principal

Cammie Harris, Wood Middle School Principal

Babs Freitas, Bay Farm Elementary School Principal

Aurora Sweet, Edison Middle School Principal

Hank Morten, Alameda Police Department

### **Community Involvement for Fencing:**

*"It is advised to engage the community  
(adjacent homeowners, etc.) in the  
design process for the perimeter fencing."*



# Safety and Security Committee's Recommendations

## Overview

(Typical at all schools)

- FENCING AND GATES
- ADMINISTRATION AND MAIN ENTRANCE
- WINDOWS AND GLAZING
- POLICIES AND PROCEDURES
- DOOR LOCKS AND ACCESS CONTROL
- SECURITY MANAGEMENT AND COMMUNICATIONS SYSTEMS
- VIDEO SURVEILLANCE
- SITE LIGHTING
- PARKING AND DROP OFF/SITE ACCESS SAFETY
- DISASTER PREPAREDNESS



# Examples of Ornamental Fencing

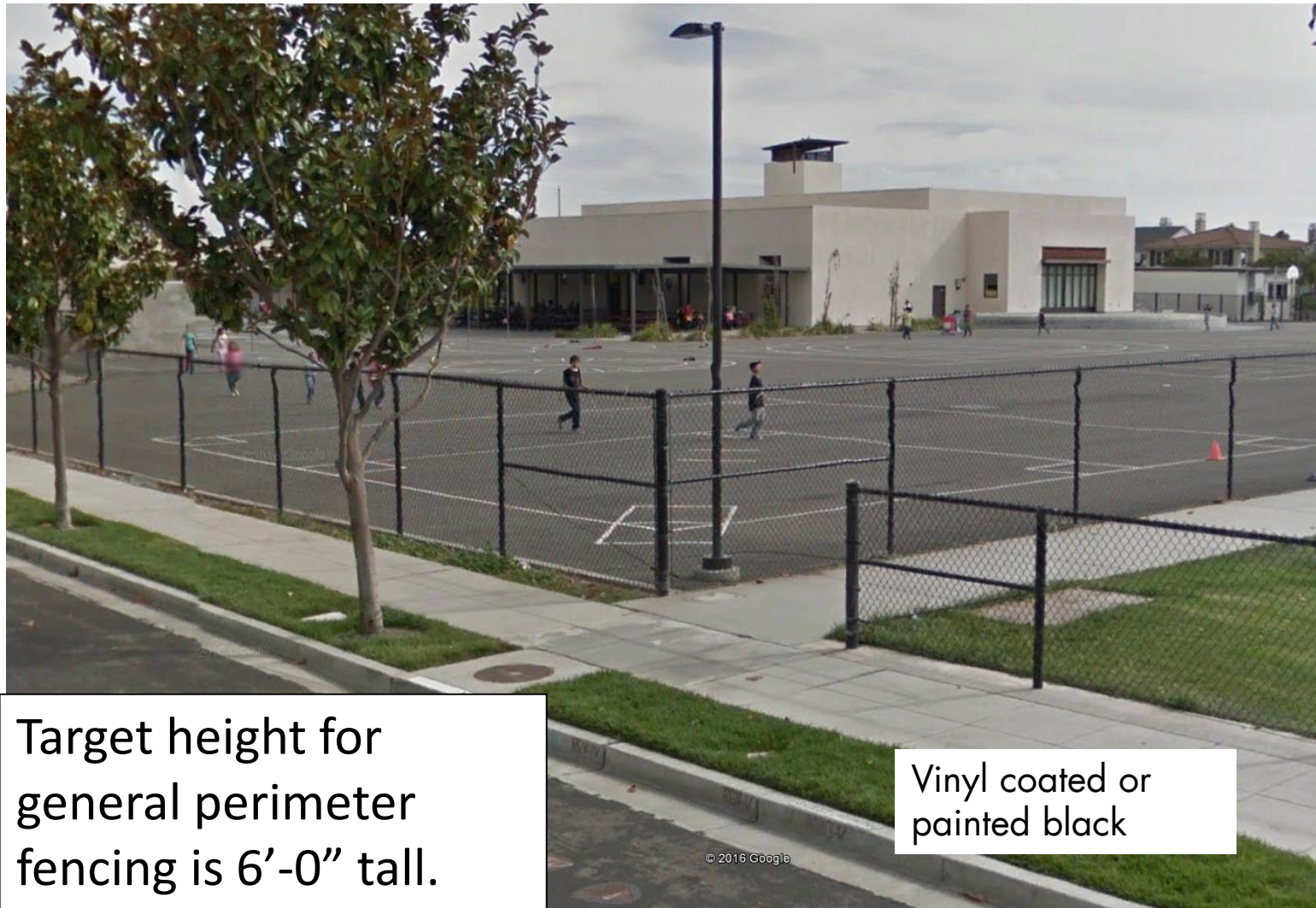
---



Target height for  
ornamental fencing is  
6'-0" tall.



# Examples of General Perimeter Chain Link Fencing



Target height for  
general perimeter  
fencing is 6'-0" tall.

Vinyl coated or  
painted black

# Bay Farm Elementary School

---

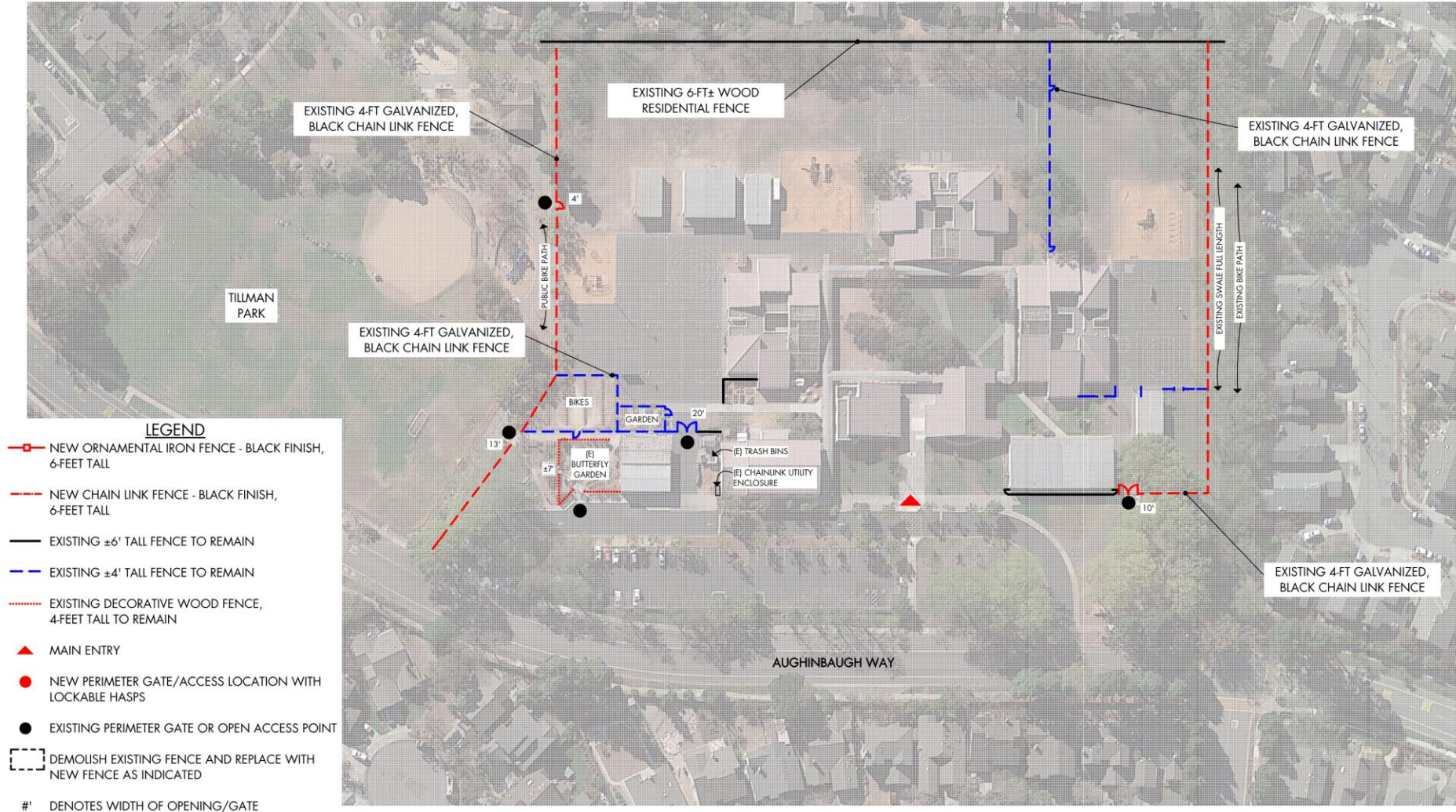
A background image showing three young children of diverse backgrounds looking intently at a tablet screen. The image is semi-transparent, allowing the text to be overlaid.

## Safety and Security Upgrades - Perimeter Fencing Schematic Design

ALAMEDA UNIFIED SCHOOL DISTRICT

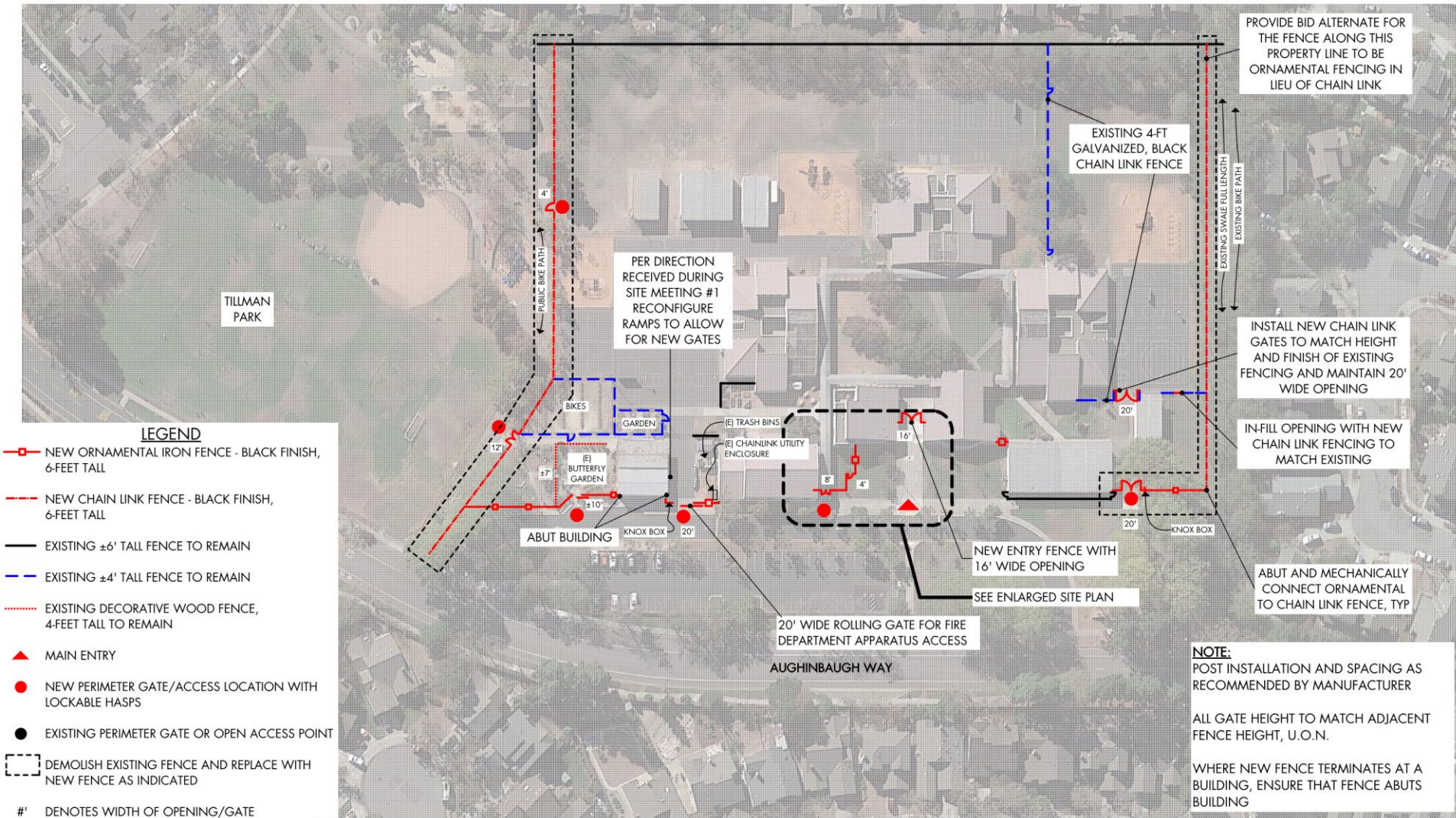


# Site Plan with Existing Fencing and Gates





# Site Plan with Proposed Fencing and Gates





# Butterfly Garden

---





# Utility and Emergency Vehicle Driveway

---





# MPR Entry Courtyard

---

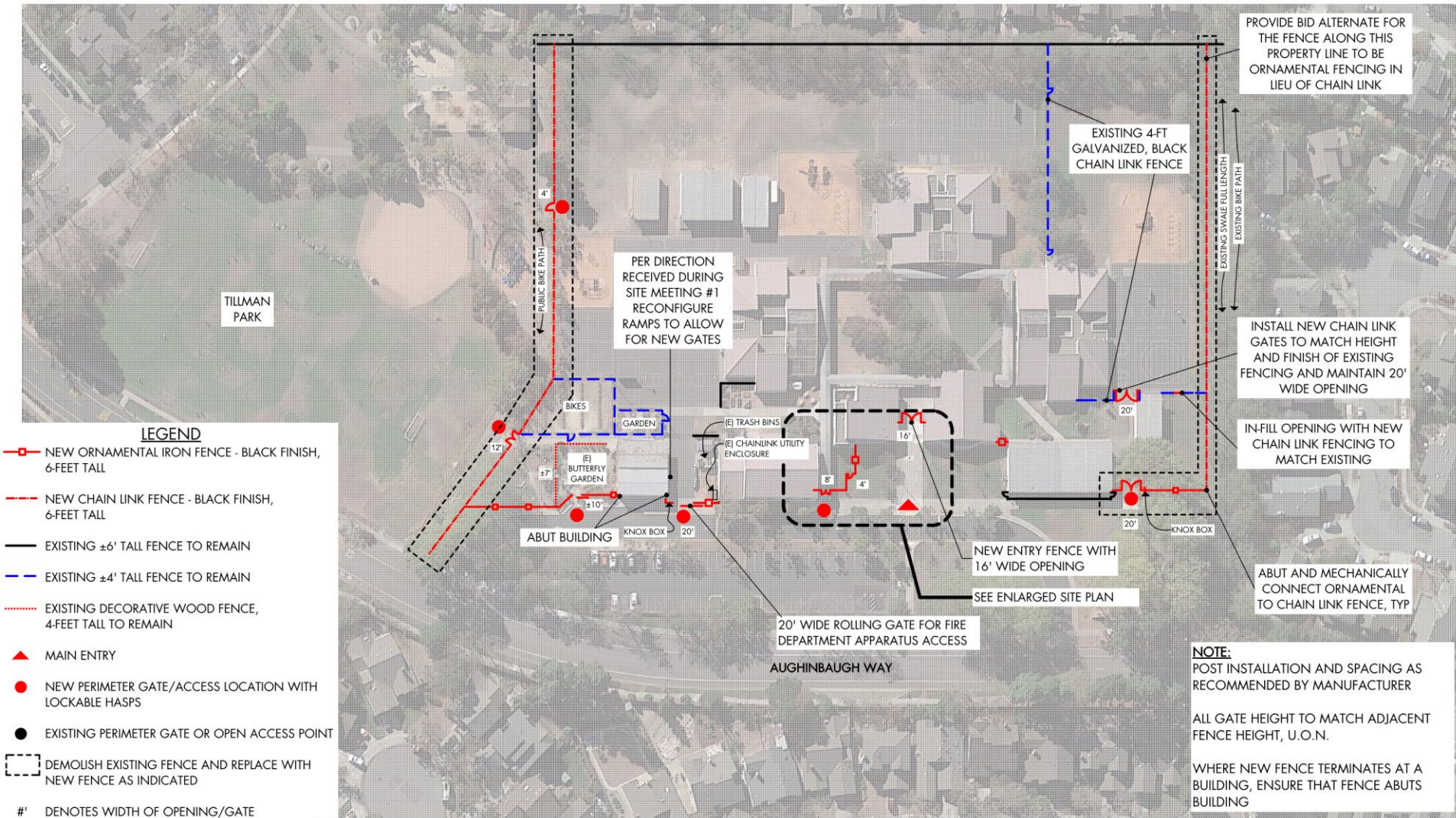


# Primary Entry Courtyard at Admin.



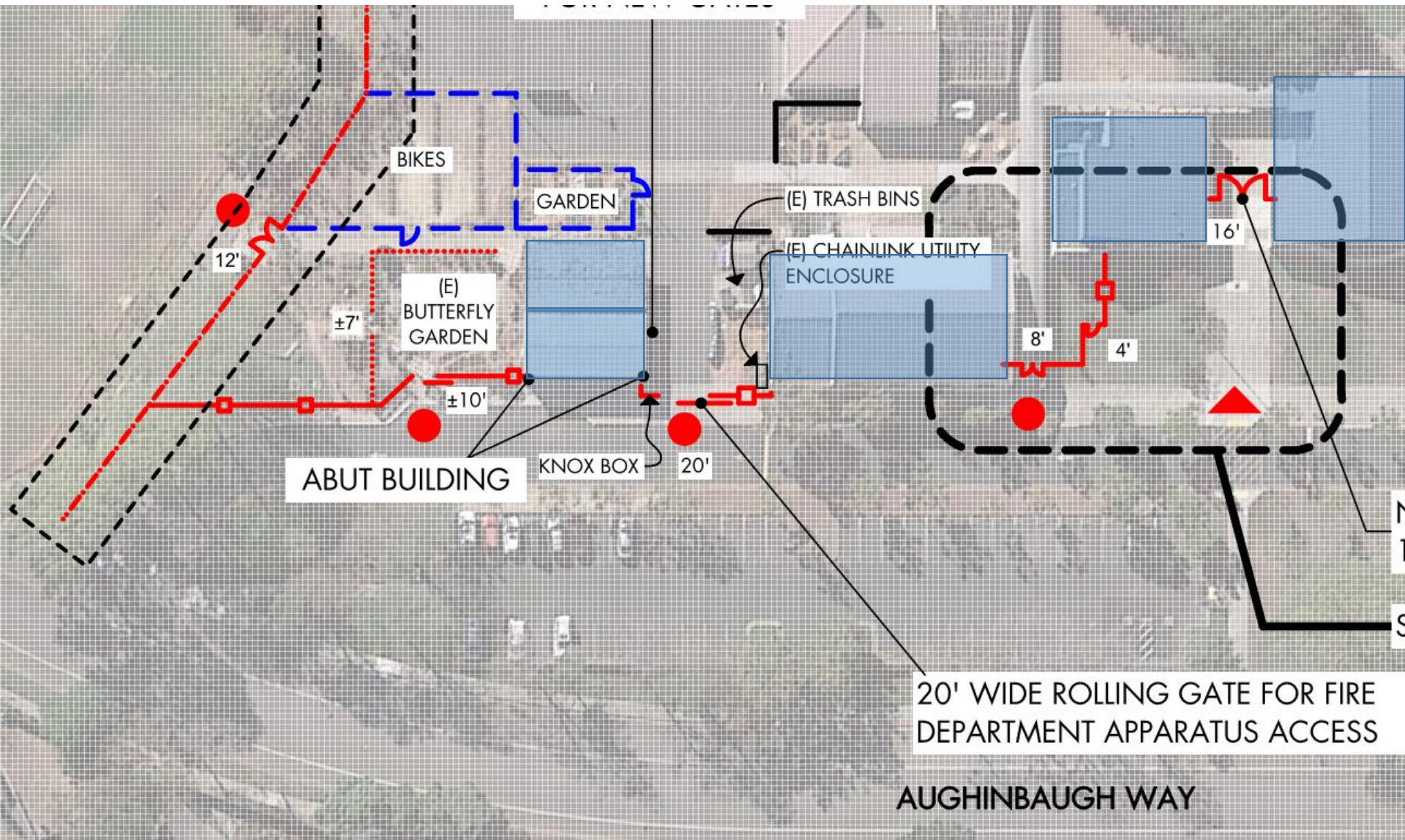


# Site Plan with Proposed Fencing and Gates



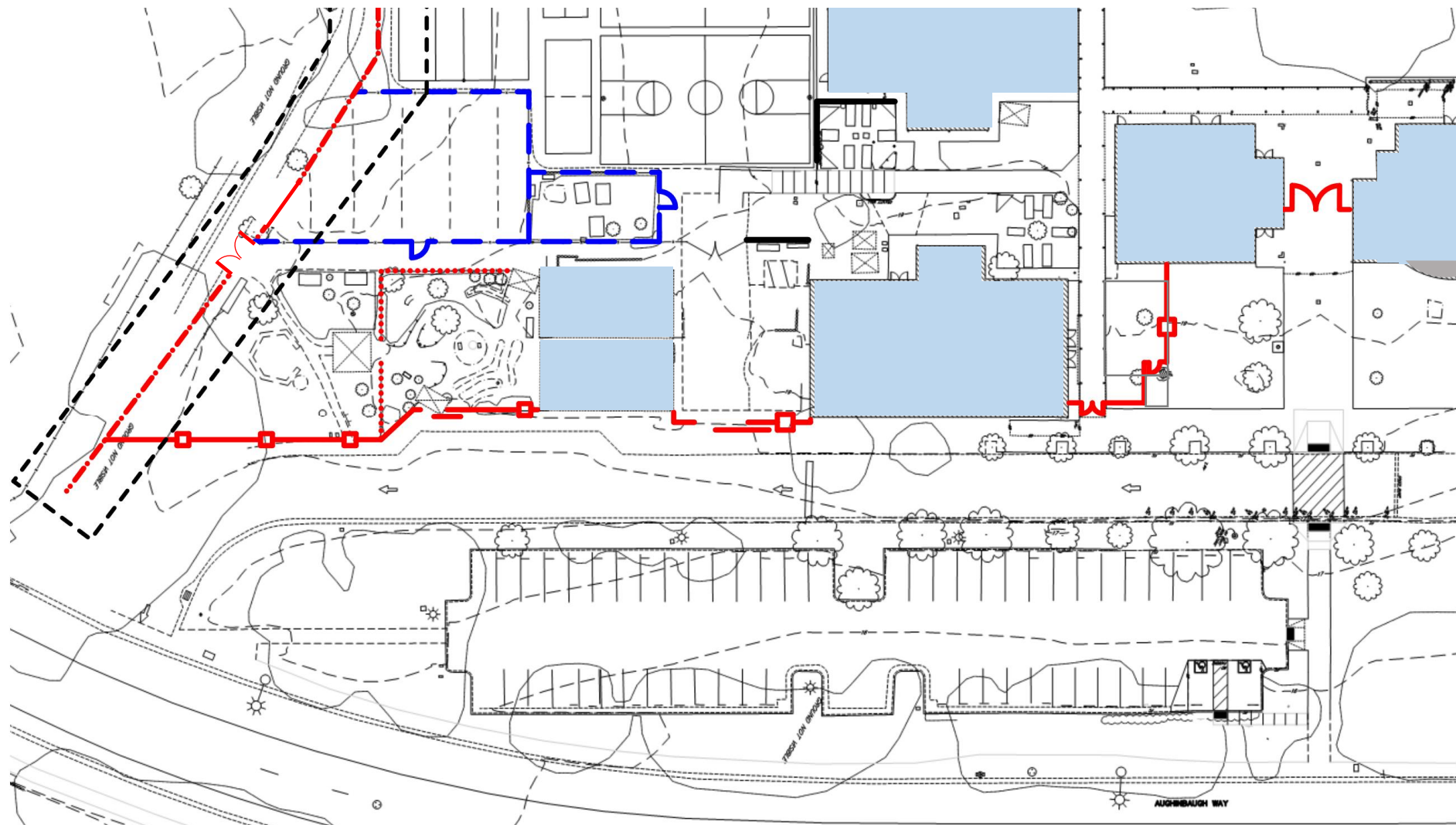


# Site Plan with Proposed Fencing and Gates





# Site Plan with Proposed Fencing and Gates



# Bay Farm Elementary School

---

A background image showing three children looking intently at a screen. The image is faded and has a blue tint. The child in the center is a young boy with light hair, looking directly at the camera. To his left is a girl with dark hair, and to his right is another girl with light hair, both looking towards the screen.

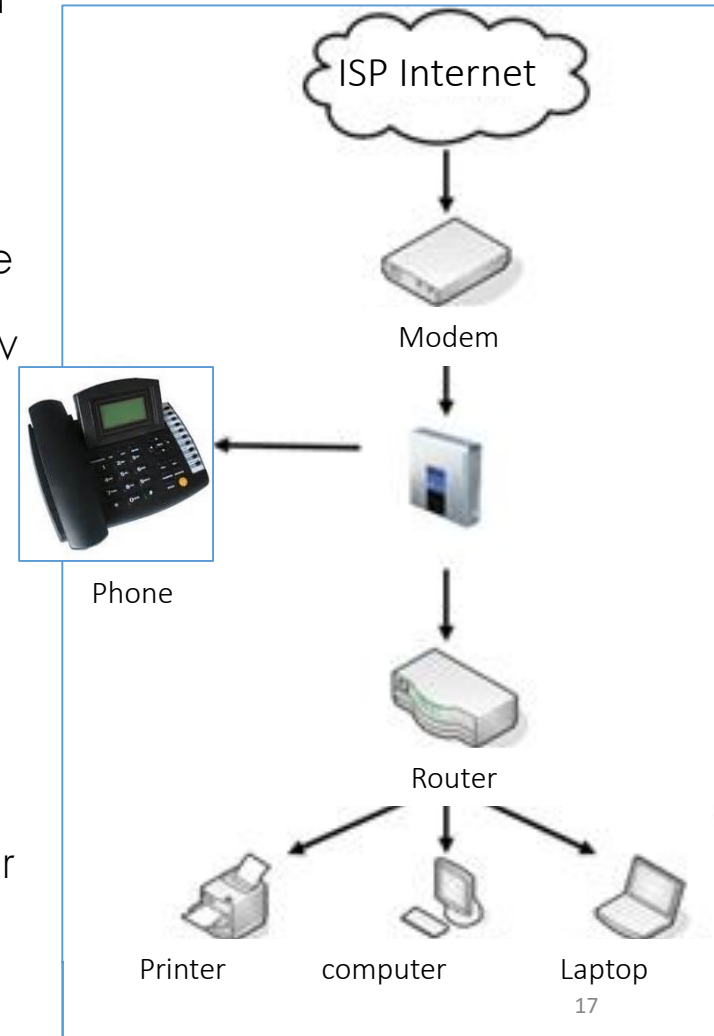
## Technology and Communications Upgrades

ALAMEDA UNIFIED SCHOOL DISTRICT



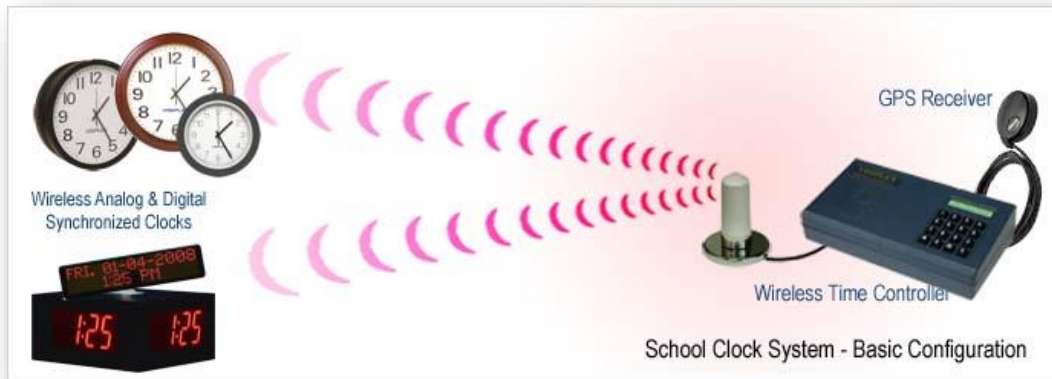
## Communications

- The Committee made specific recommendations for a dedicated telephone handset for inter-School and external communication ability.
- The telephone handset should be a Voice over IP style (VoIP), connected to the data network system, to allow call-out of local and external phone calls as required.
- Back-up uninterruptable power supply (UPS) equipment will need to be provided at each data system cabinet.
- A public address system should be incorporated into the telephone system to allow individual Classroom or all-call and exterior paging capabilities to each area of the School.



## Clocks

- The clocks may be wireless, battery powered, GPS controlled clocks, or hard-wired conventional clocks, wired to the head-end master clock system. Clocks shall be 12" round, flush wall mounted, analog type, or square digital type, with black letters on a white background.





# Bay Farm Elementary School

PROJECT BUDGET					
Campus Budget (2014 Implementation Plan B)				\$6,300,000	
Escalation through 2016 only (5% annually) per approved bond budget				\$315,000	
Total Project Budget				\$6,615,000	
Minus Soft Costs (30% of Total Project Budget)				\$1,984,500	
Current Construction Budget				\$4,630,500	
PROJECT COSTS					

# Bay Farm Elementary School

Board Schematic Design Presentation

May 22, 2017

QUESTIONS?

ALAMEDA UNIFIED SCHOOL DISTRICT