

Facilities Construction Update

November 27, 2018

Facilities Construction Projects

- **Edison Elementary** – Project awarded on April 24, 2018. 99% of work completed 2018.
- **Paden Elementary School** – Project awarded on April 24, 2018. 99% of work completed 2018.
- **Ruby Bridges** – Project awarded on April 24, 2018. 99% of work completed.
- **Historic Alameda High School (under Construction)** – Seismic Mitigation & Modernization. On schedule to be completed September 2019. Building will be open for students and staff.
- **Encinal Junior & Senior High School** – Currently in DSA. Preconstruction services has begun. Actual construction or demo will begin after Board makes a decision on High School Consolidation
- **Haight Elementary School** – Currently in DSA. Work to start 2019.
- **Franklin Elementary School** – Currently in DSA. Work to start 2020.
- **Lincoln Middle School** – Currently in DSA. Work to start 2019.
- **Fencing for Earhart, Bay Farm and Otis** – Currently in DSA. Work starting 2018/2019.
- **Otis Toilet Room Addition** – Work to start 2019.
- **CLCS Portables** – Project awarded on April 24, 2018. 99% of work completed 2018.

Measure I Bond Projects

Edison Elementary School

- Site work & new front security gate/fencing/paint
- New windows and modernization in Media Center rooms



Measure I Bond Projects

Edison Elementary School

- New Admin Office



- New ADA ramp and railings behind MP Room



Measure I Bond Projects

Paden Elementary School

- Modernization of front of school and new ADA access ramp
- Classroom windows replacement



Measure I Bond Projects

Paden Elementary School

- Classroom windows replacement
- Exterior classroom window replacement



Measure I Bond Projects

Paden Elementary School

- Classroom windows replacement
- Exterior classroom window replacement
- New paint on portables and new ADA ramp



Measure I Bond Projects

Ruby Bridges Elementary School

- New kindergarten playground entrance
- New lights for covered walks



Measure I Bond Projects

Ruby Bridges Elementary School

- Room 402 new VCT floor



New science room, casework, and flooring Room 402



New Single use Restroom in MP Building

Measure I Bond Projects

Historic Alameda High School

- Science Building old roof before construction
- New roof Science Building and Central Building



New Roof at East and West Wing



Measure I Bond Projects

Historic Alameda High School

- Science Building demo flooring and new floor framing
- New roof Science Building and Central Building
- Before drywall in hallways, East and West Wings
- Drywall in hallways East and West Wings



Measure I Bond Projects

Historic Alameda High School

- Before drywall in classroom
- Completed drywall in classrooms, East and West Wing
- New stairs at Central Arcade



Measure I Bond Projects

Historic Alameda High School

- Science Building new floor framing
- Science Building finished floor framing
- Pouring concrete in Central Arcade



Measure I Bond Projects

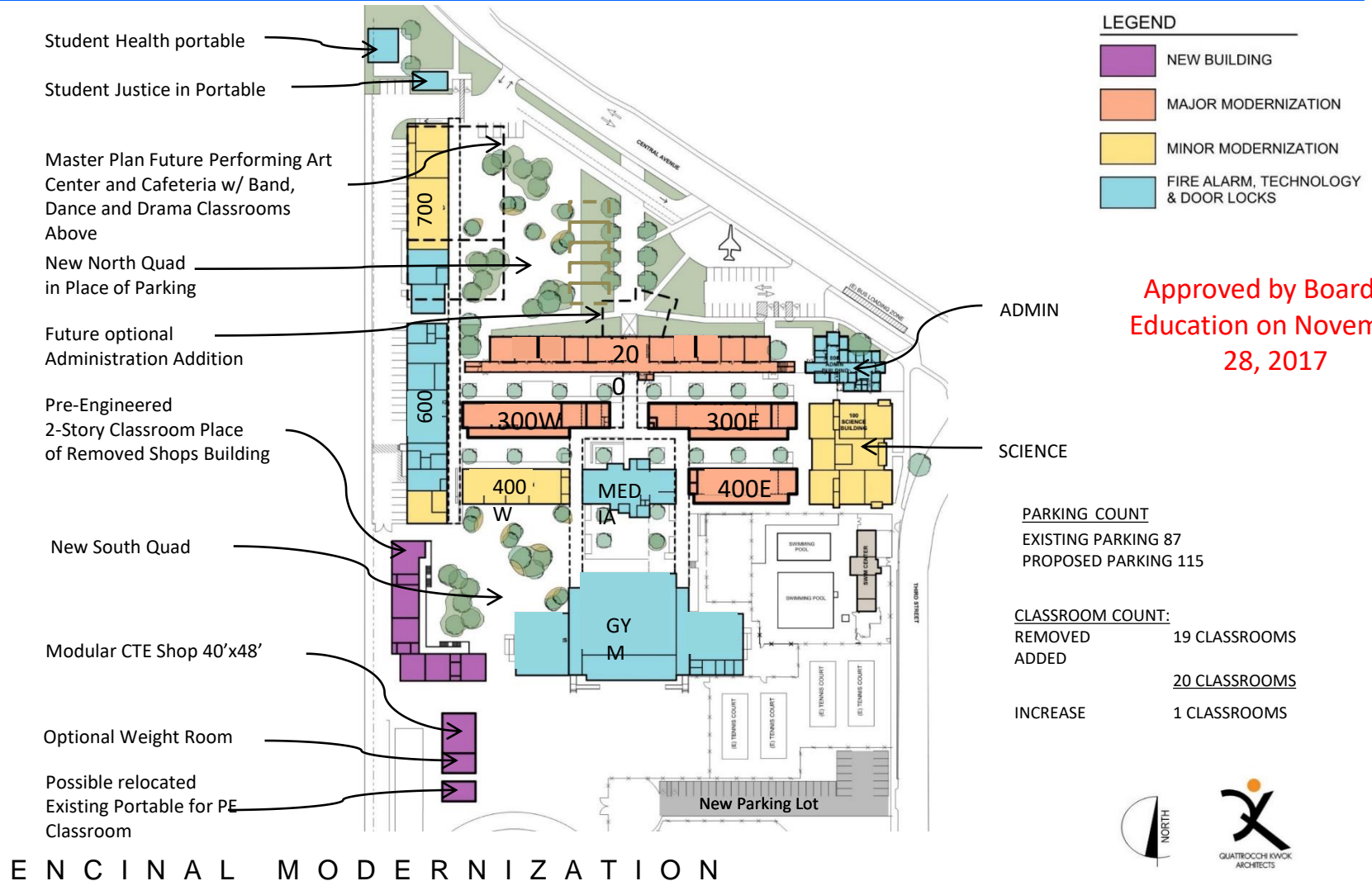
Historic Alameda High School

- Science Building roof installation
- Science Building framing, electrical and plumbing
- New student restroom tile installation



Structure Columns Repair

Measure I Bond Projects: Encinal

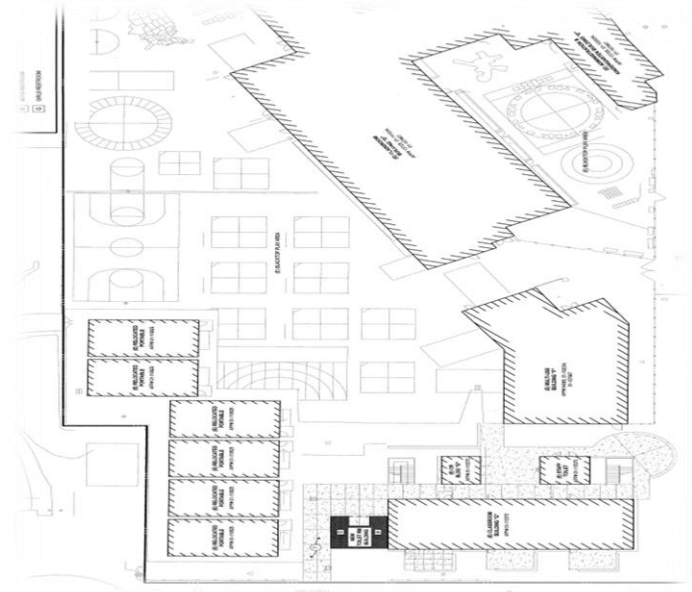
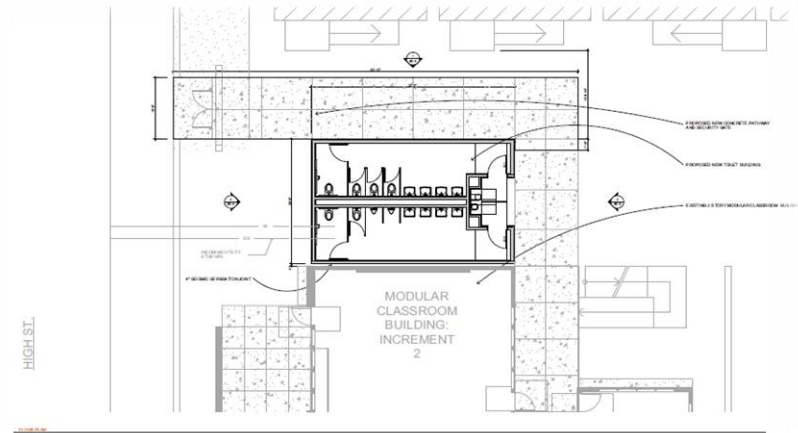
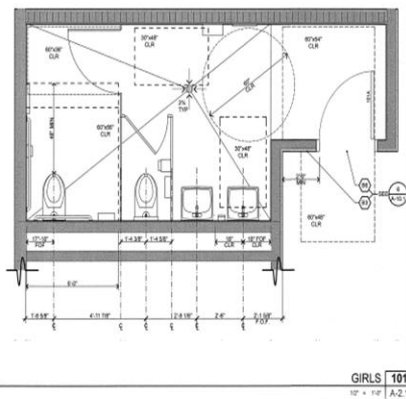
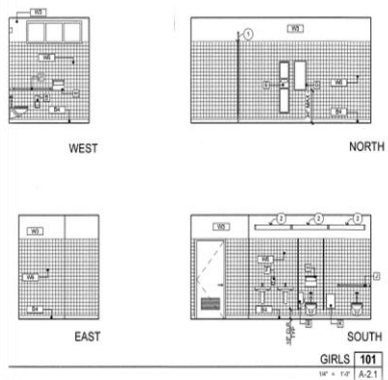
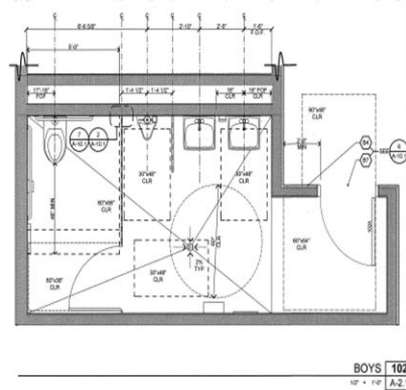
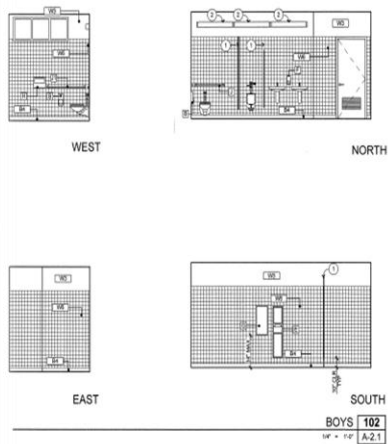


Measure I Bond Projects: Encinal

- At the April 24, 2018 Board of Education meeting, the Board directed staff to prepare a timeline of the process of evaluating consolidation of high schools.
- Alameda and Encinal Jr/Sr High School (Encinal) projects are in various stages of planning, design, modernization, and construction.
- New classroom space planned at Encinal may not be needed if the two schools are consolidated.
- On May 8, 2018, the Board of Education directed the staff to continue with all design work, but not to demolish or construct any building.
- Guidance needed on Encinal construction by end of February 2019 to reduce cost increases.

Facilities Fund Project

Otis Elementary Toilet Room Addition



CLCS Funded Project

CLCS Woodstock Portables

- Six new classroom portables
- One new restroom portable
- New ADA ramp
- Site improvement work



A blue-tinted photograph of three children looking intently at something off-camera. The child in the center is a young boy with light hair, looking slightly to the right. To his left is a girl with dark hair, also looking right. To his right is another girl with light hair, looking more directly at the camera with a slightly open mouth. The text "Thank you" is overlaid in white serif font in the center.

Thank you

ALAMEDA UNIFIED SCHOOL DISTRICT